



1 Prince Rupert Avenue
Kettering, NN14 2PH



Simpson Ellson

Improved Two-Bedroom Bungalow – This well-presented home has been thoughtfully upgraded by the current owners, offering stylish and practical living throughout. Key improvements include an extended kitchen, enhancing both space and functionality.

This attractive two-bedroom bungalow offers a superb opportunity for those seeking a home that is ready to move into, with a range of tasteful upgrades already in place.

The living space is both warm and inviting, centred around a charming log-burning stove—perfect for creating a cosy atmosphere. The kitchen has been extended and refitted, now providing a more generous and practical layout suited to modern day living, while the shower room has also been upgraded with contemporary fittings.

Additional features include a useful lean-to, offering flexible extra space for storage or utility use, and a block-paved driveway to the front, providing convenient off-road parking.

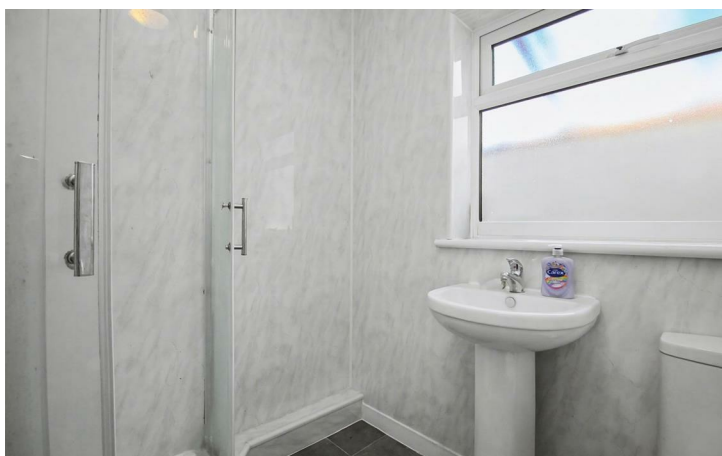
To the rear, the property benefits from a well-proportioned, private garden—ideal for relaxing, gardening, or enjoying outdoor space in peace.

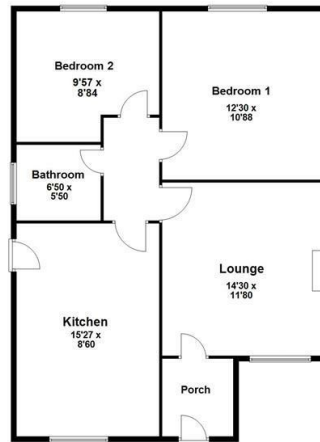
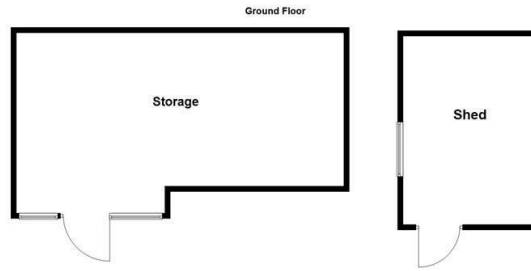
This is a fantastic opportunity to acquire a well-maintained and improved bungalow, and early viewing is highly recommended to fully appreciate all that is on offer.



£240,000

2 1 1





Energy Efficiency Rating

	Current	Potential
<i>Very energy efficient - lower running costs</i>		
(92 plus) A		
(81-91) B		
(69-80) C		
(55-68) D		
(39-54) E		
(21-38) F		
(1-20) G		
<i>Not energy efficient - higher running costs</i>		
England & Wales	EU Directive 2002/91/EC	





**Simpson
Ellson**

T: 01536 645960

E: rothwell@simpsonellson.co.uk



01536 645960

rothwell@simpsonellson.co.uk

<https://www.simpsonellson.co.uk>

32 High Street, Rothwell, Northants, NN14 6BQ